

[IQinVision](#)

[How to configure IQeye H.264 stream](#)

[A-MTK](#)

[How to enable two-way audio?](#)

[How to enable DI/DO?](#)

[How to enable on-screen PTZ?](#)

[JVC](#)

[How to support JVC VN-V25 and VN-X35, and VN-V685U, VN-686U, VN-686](#)

[Setting up VN-V685U, VN-686U, VN-686](#)

[Setting up VN-V25 and VN-X35](#)

[AirCam \(Ubiquiti\)](#)

[Configuring Ubiquiti AirCam using RTSP](#)

[Instructions](#)

[Brickcom](#)

[How to configure Brickcom Cameras?](#)

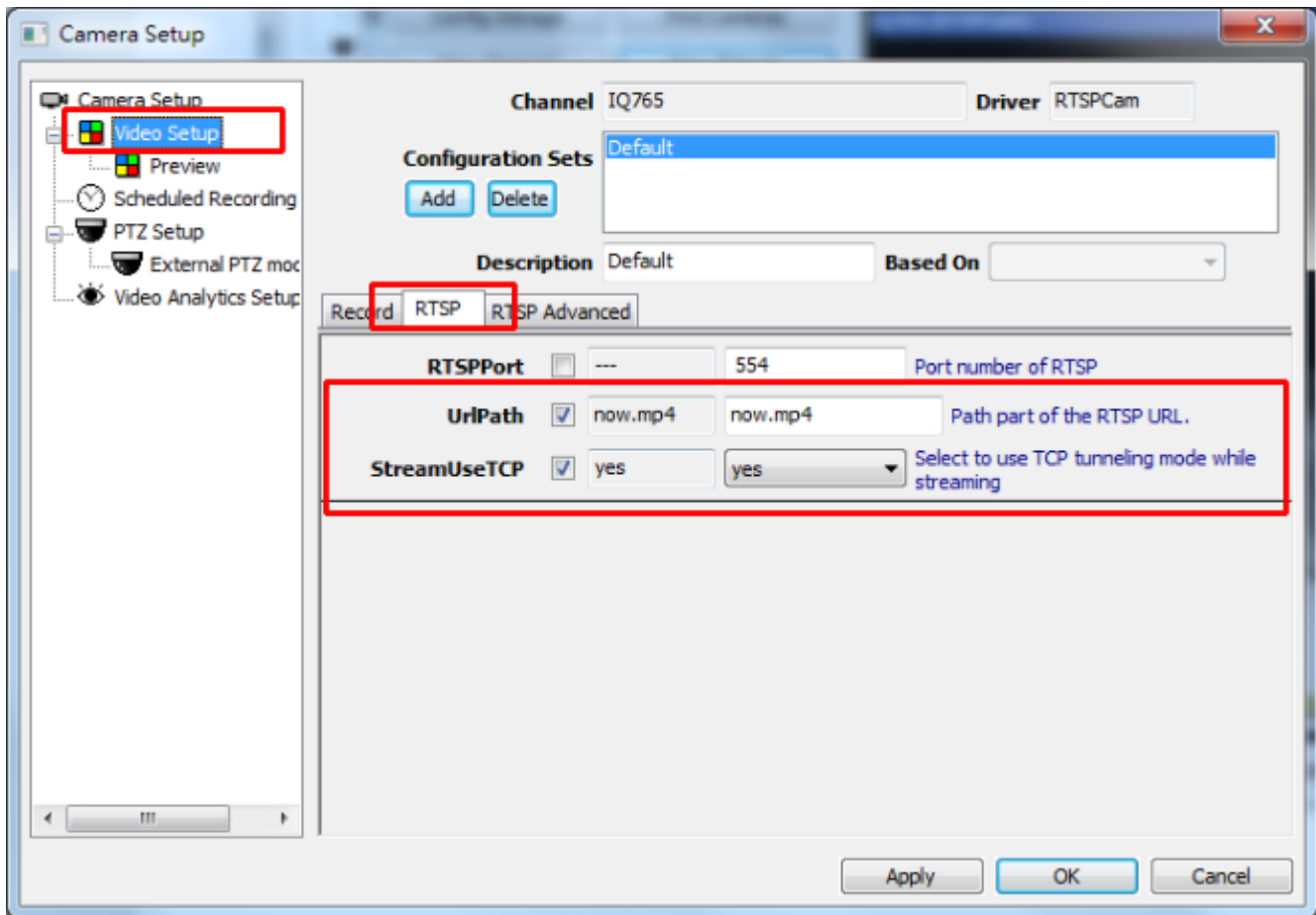
[Streaming Mode Selection HTTP](#)

[RTSP Configuration](#)

IQinVision

How to configure IQeye H.264 stream

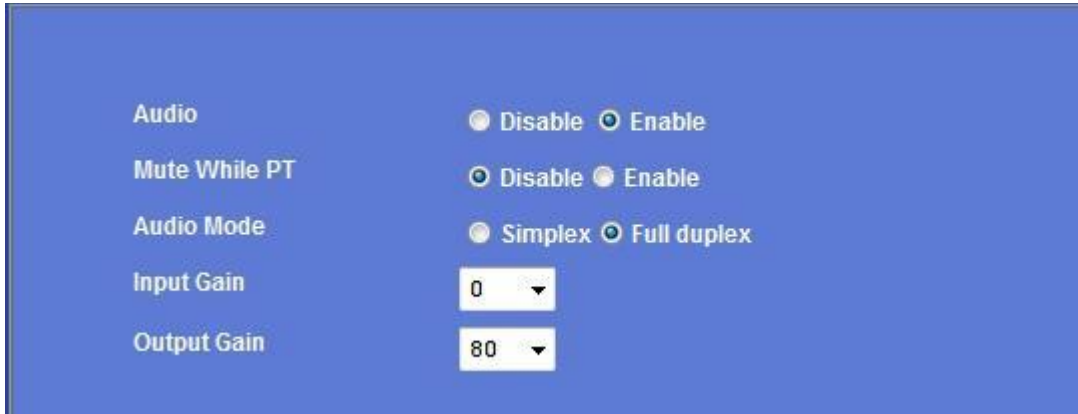
Although we do support IQeye camera, the integration took place years ago and at that moment IQeye only provides M-JPEG streaming. Nevertheless you can use RTSP configuration to see H.264 streaming, as illustrated below:



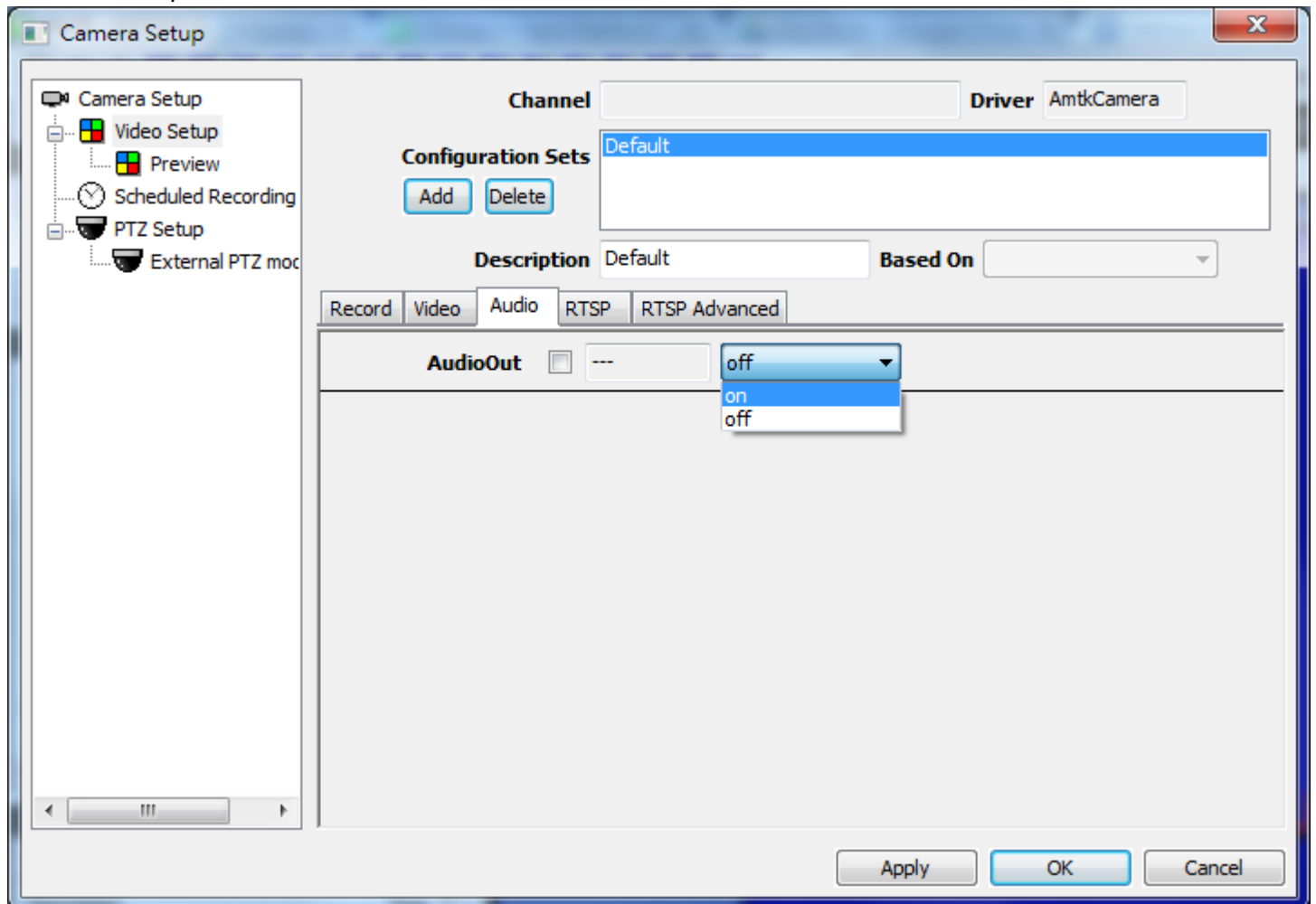
A-MTK

How to enable two-way audio?

Camera setup

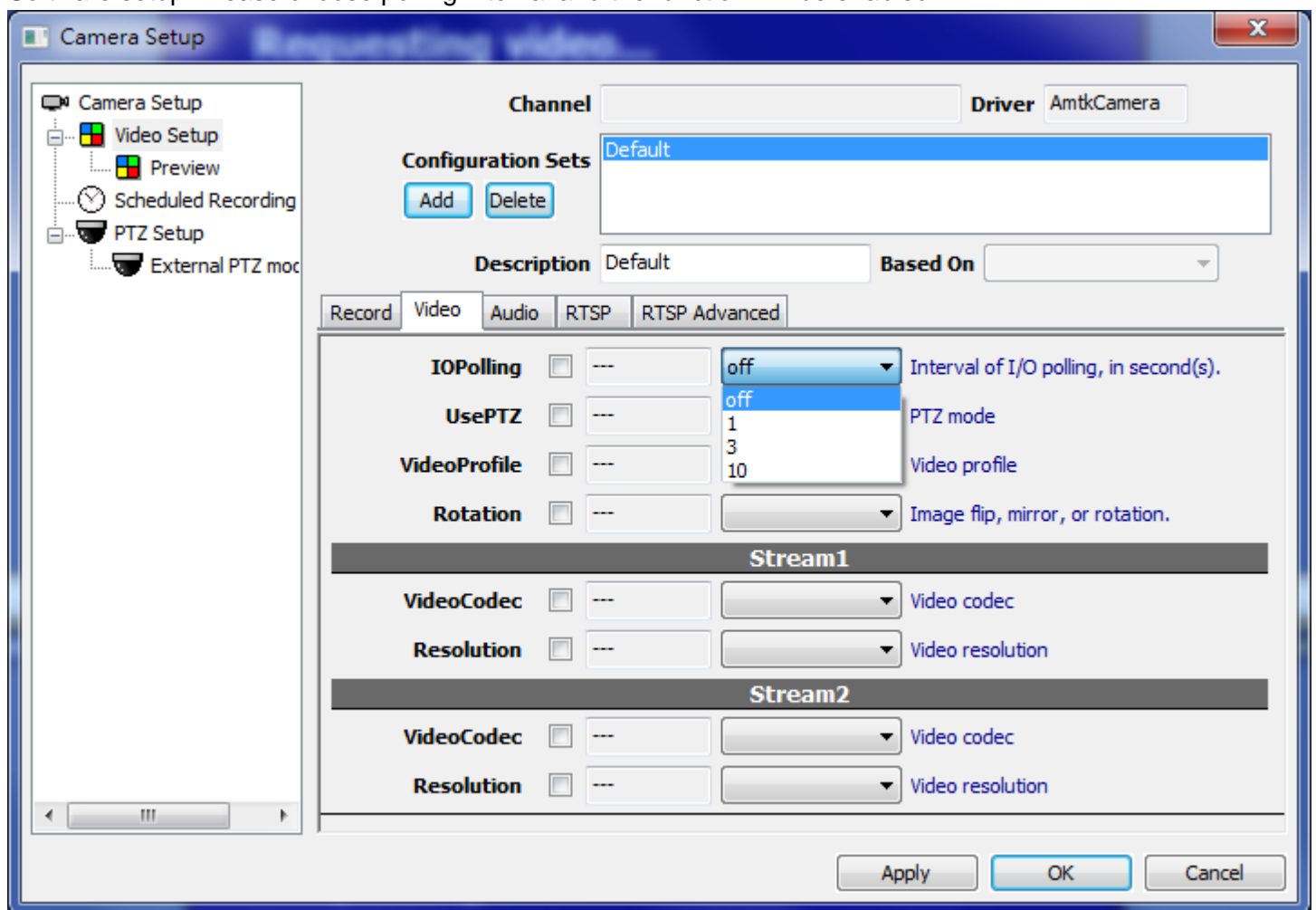


Software setup



How to enable DI/DO?

Software setup: Please choose polling interval and the function will be enabled.

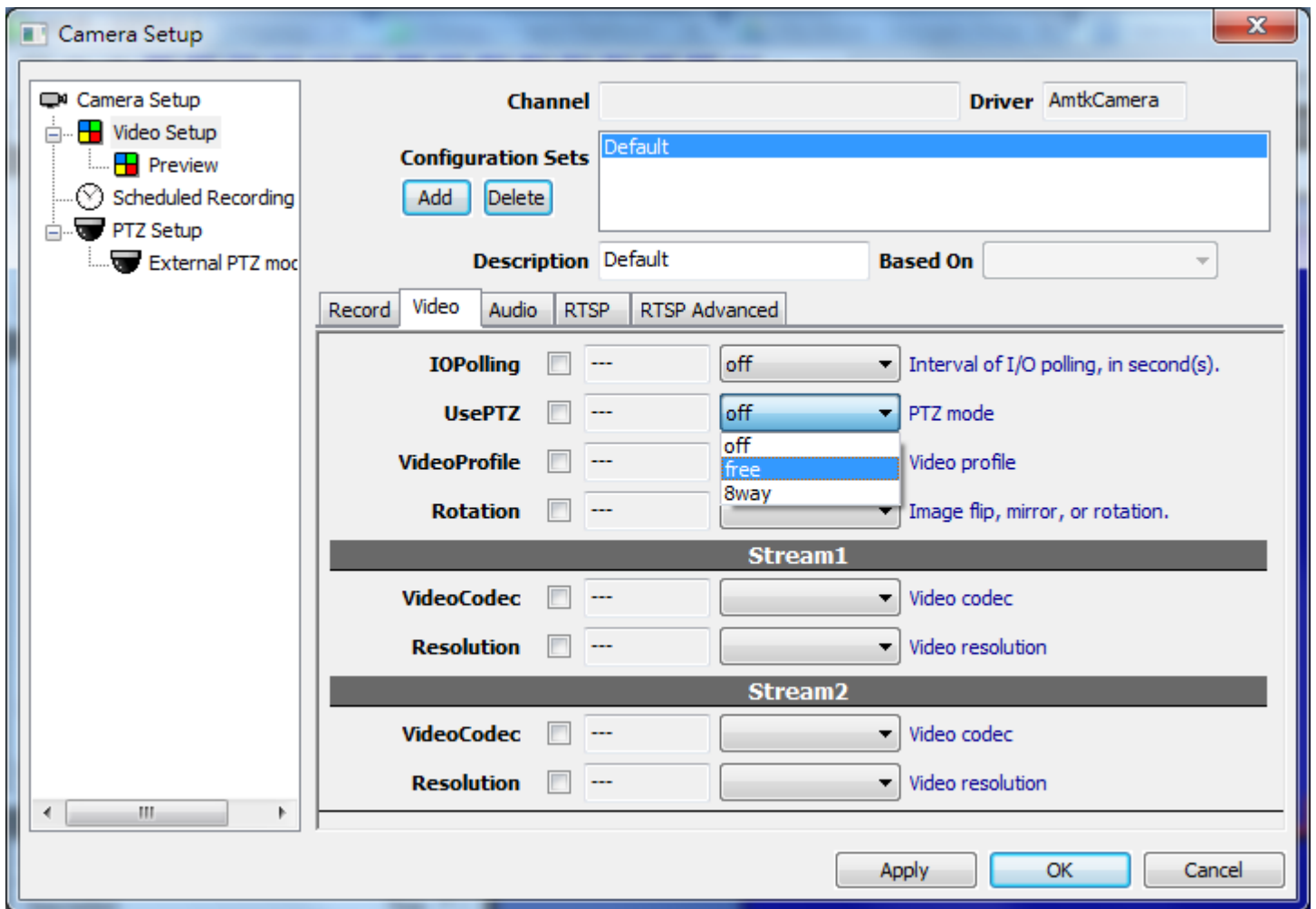


See also

- [User manual - IO polling](#)

How to enable on-screen PTZ?

Software setup: Please select PTZ control mode. There are two modes available.



See also

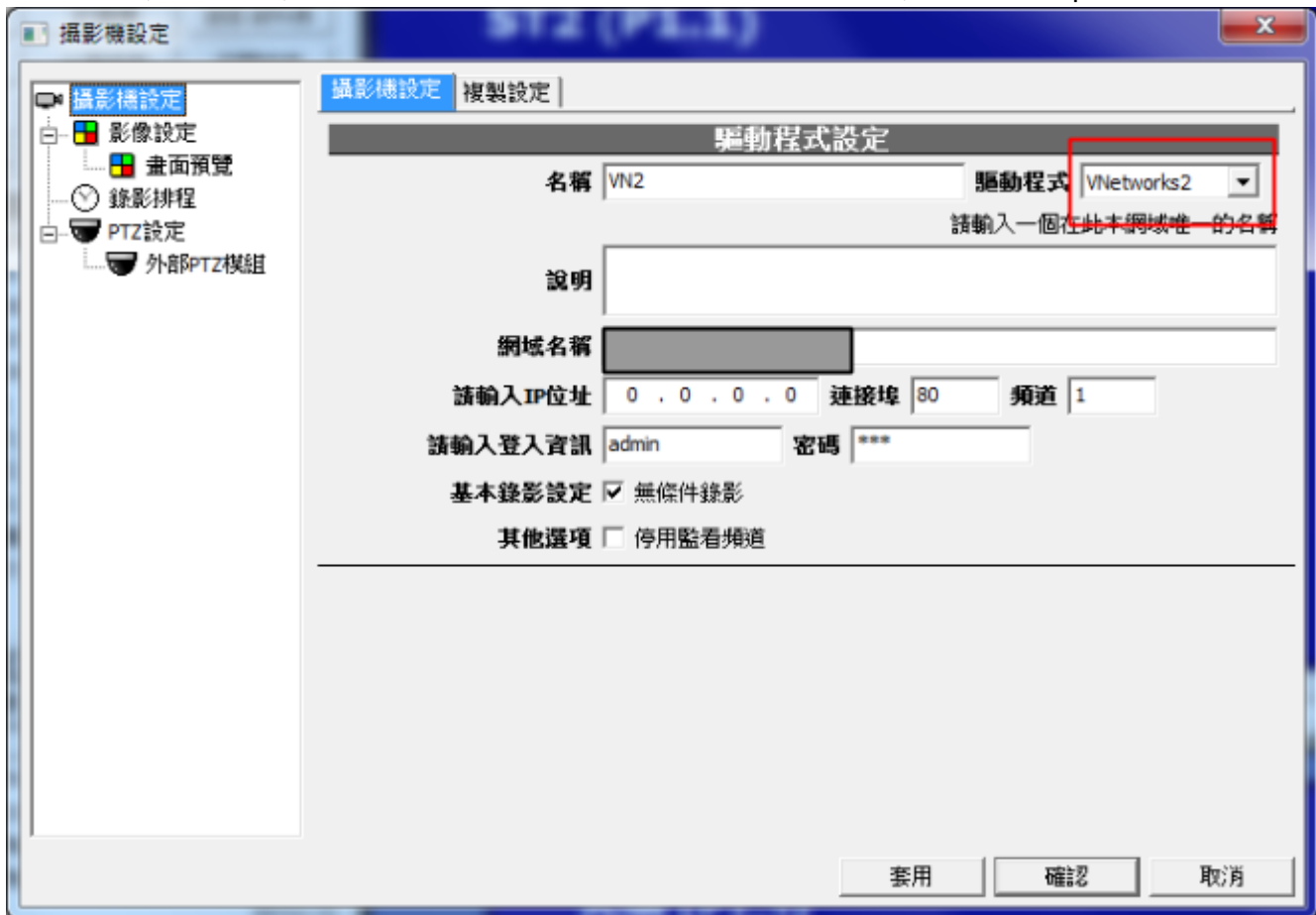
- [User manual - PTZ \(Mechanical\)](#)

JVC

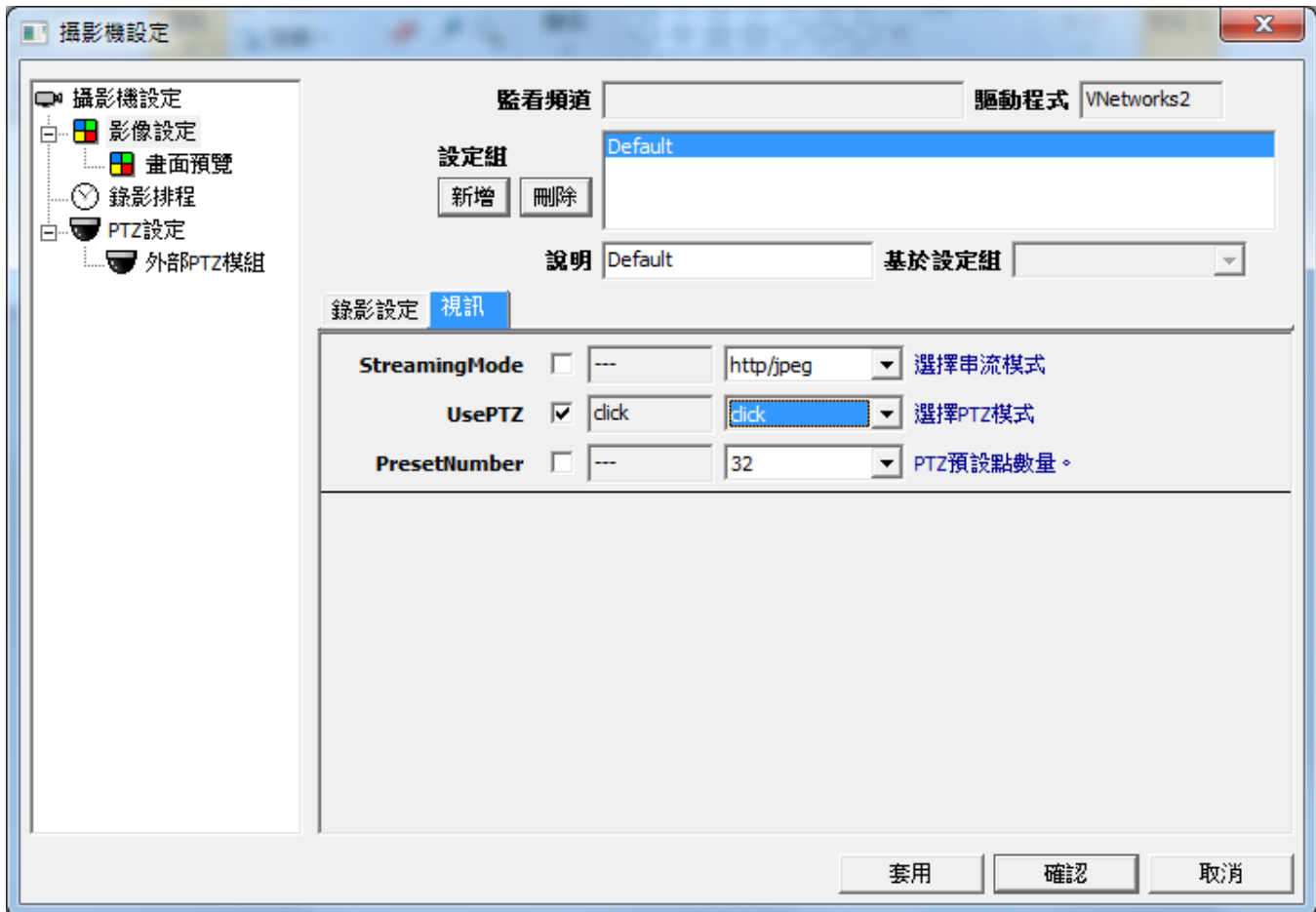
How to support JVC VN-V25 and VN-X35, and VN-V685U, VN-686U, VN-686

Setting up VN-V685U, VN-686U, VN-686

VN-V685U, VN-686U, VN-686 uses a new driver called "VNetworks2", for better implementation.

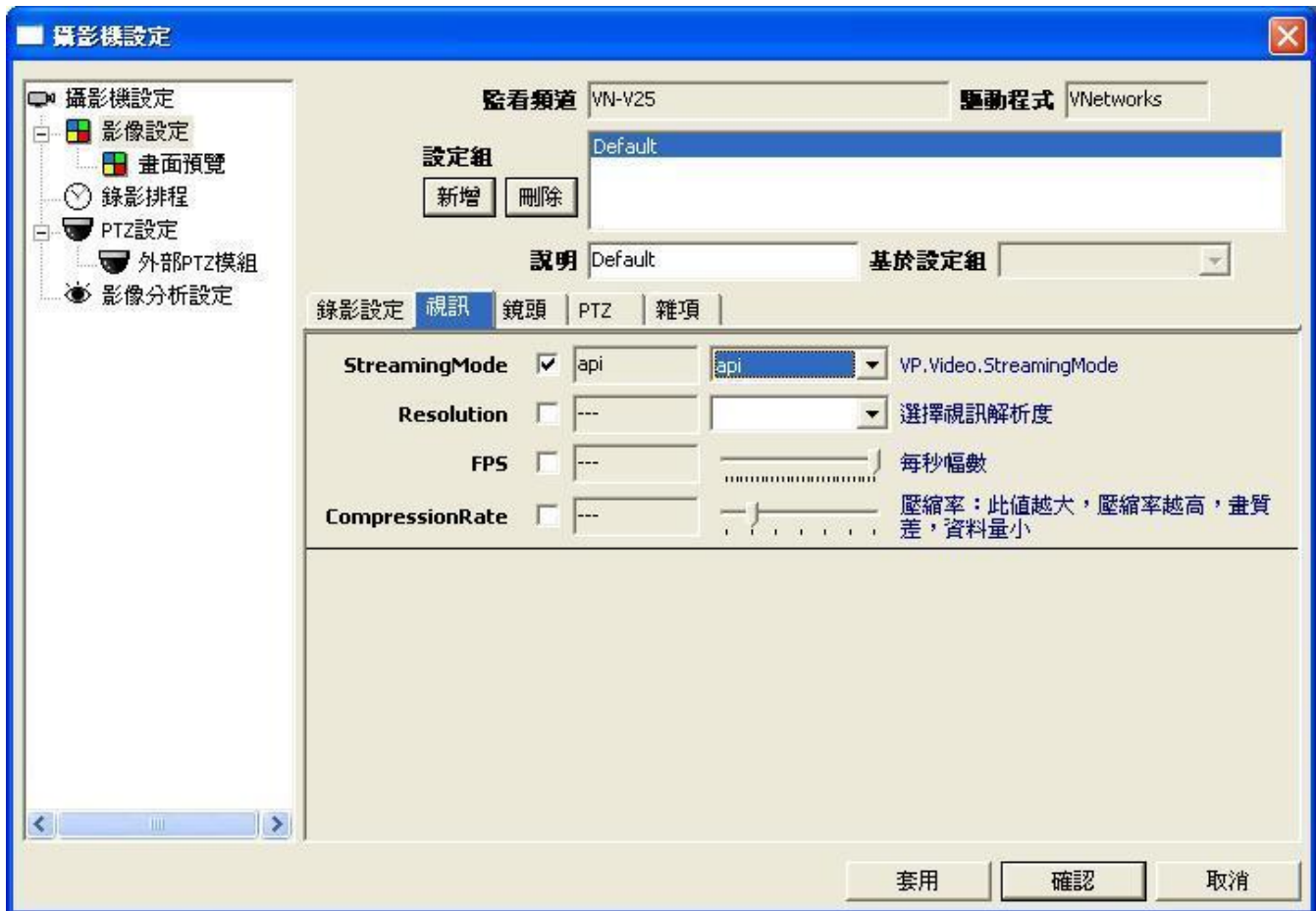


To enable click-on PTZ, do the following setup:



Setting up VN-V25 and VN-X35

VN-V25 and VN-X35 uses a different set of API VN-C38U and VN-625U used. In order to support these 2 models, you need to upgrade to a newer version and perform following configuration (Video Setup):

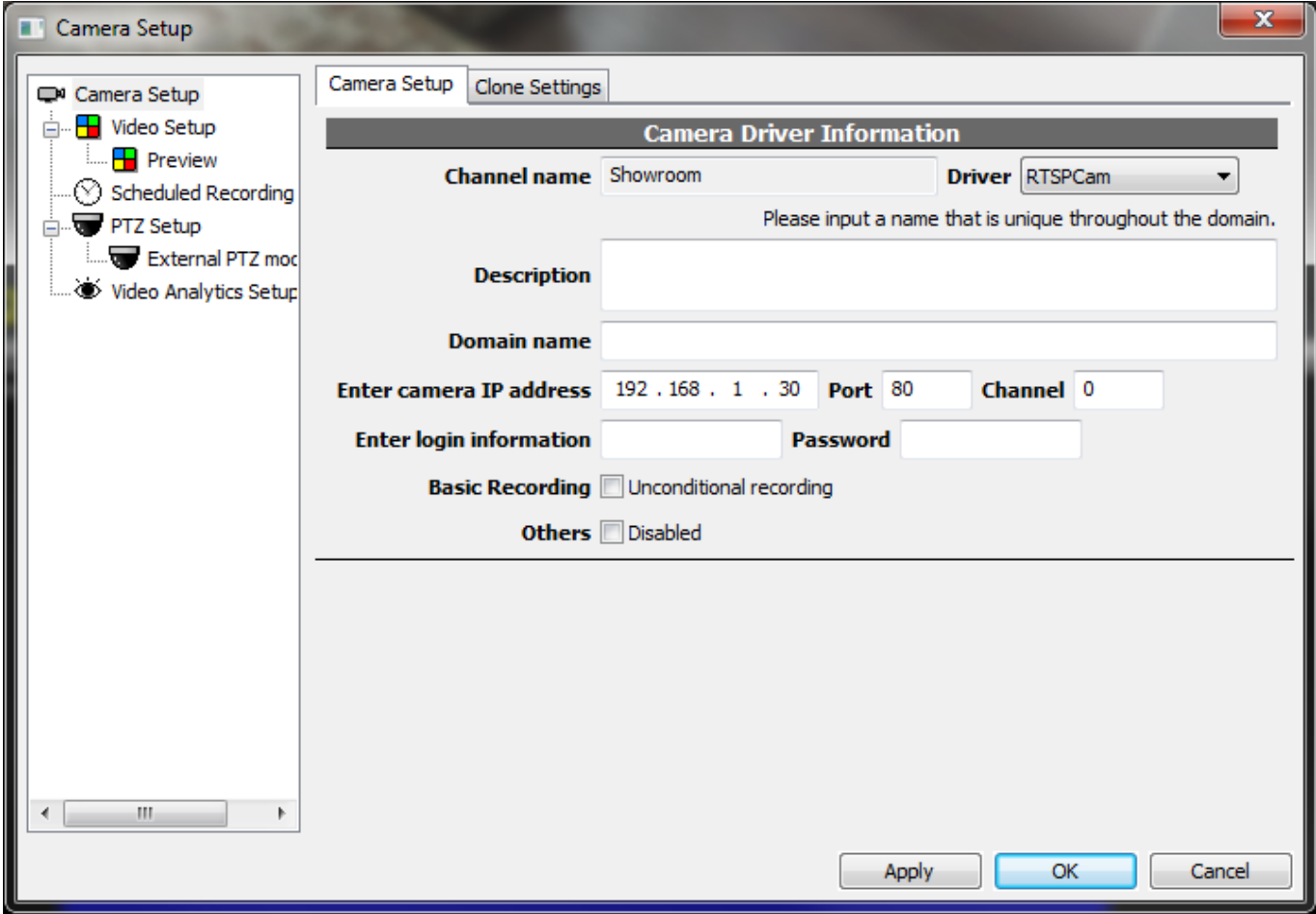


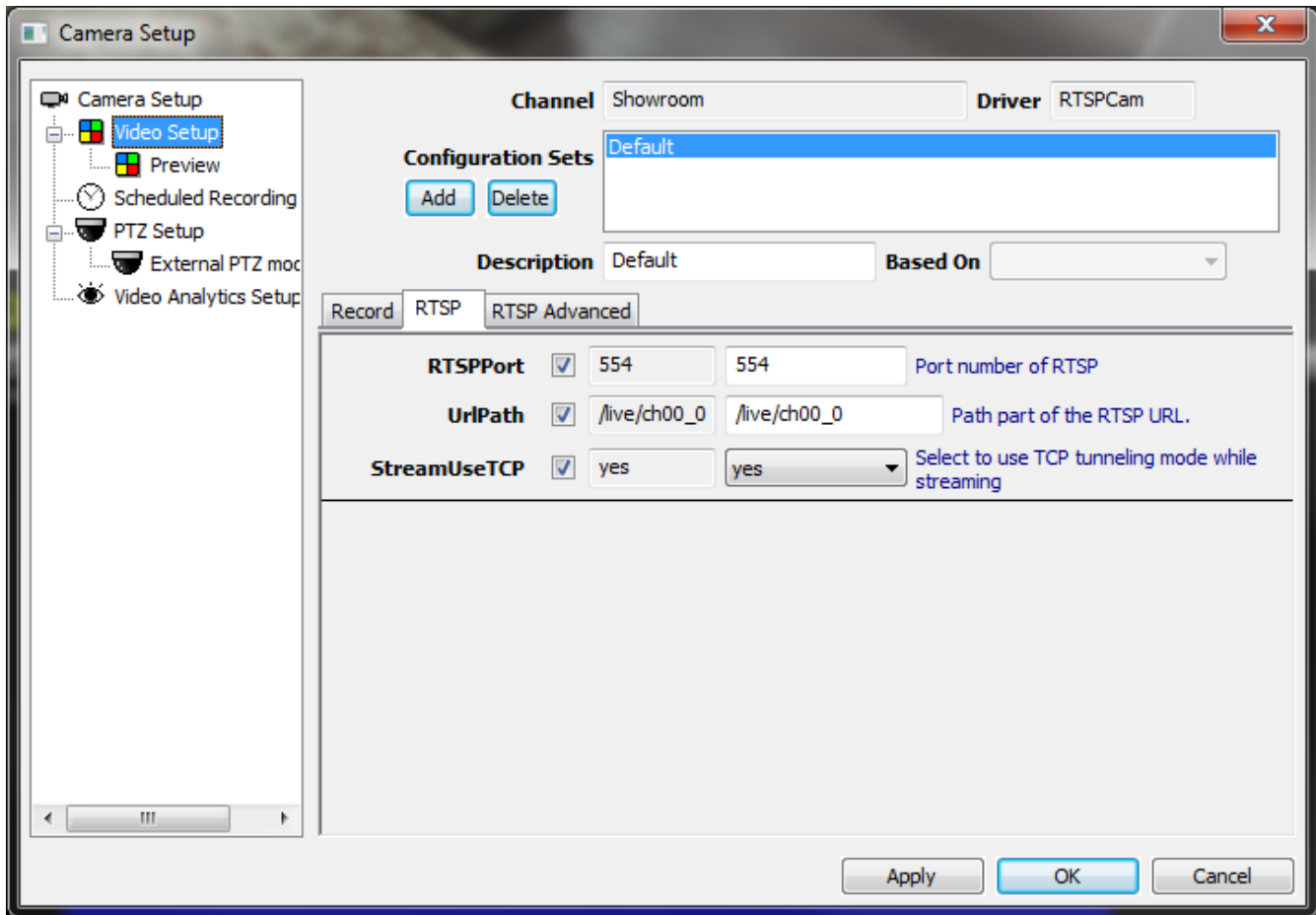
AirCam (Ubiquiti)

Configuring Ubiquiti AirCam using RTSP

Instructions

Thanks for Alex Arnold's effort to provide the instruction about how to connect Genius Vision NVR to Ubiquiti AirCam.

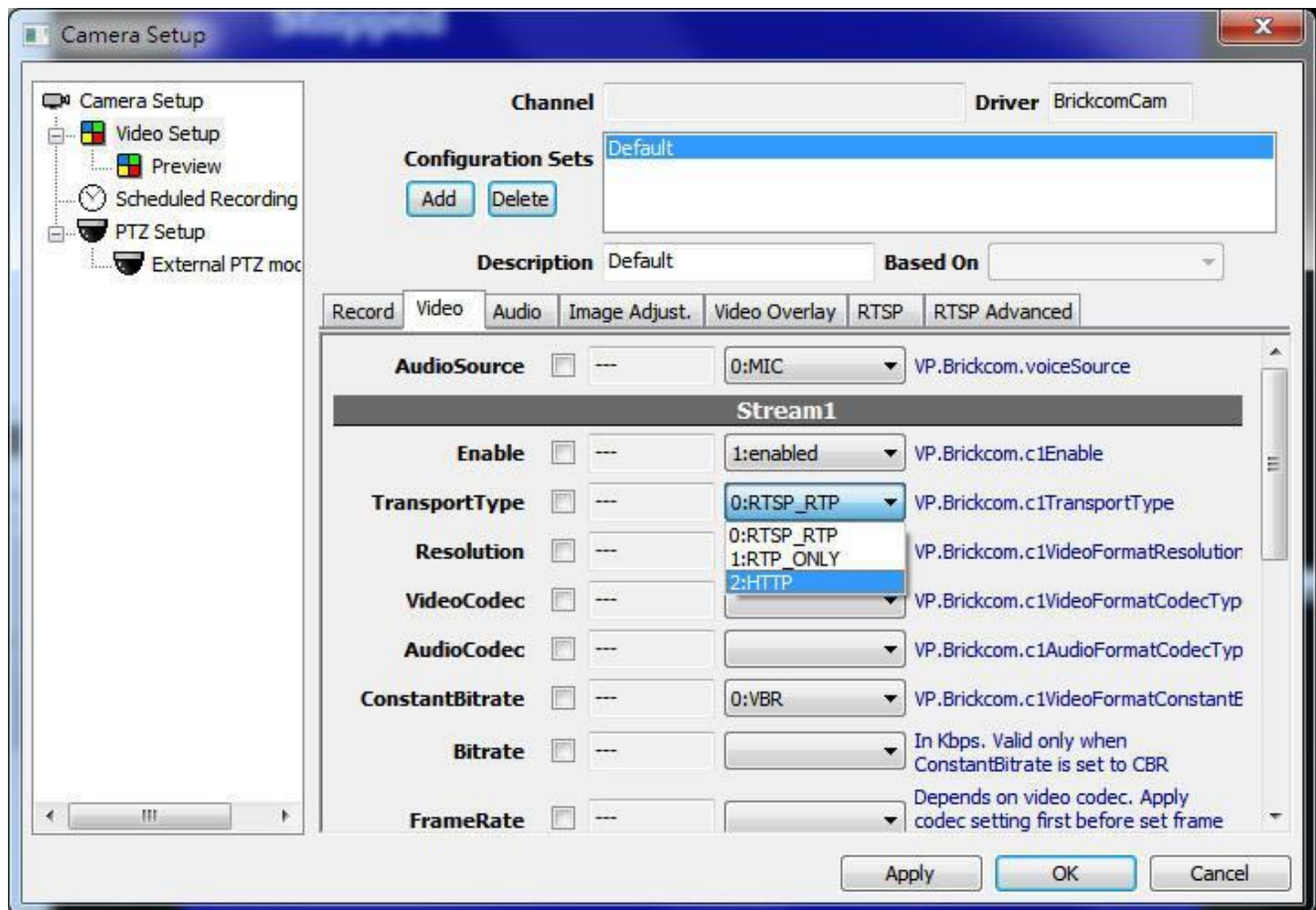




Brickcom

How to configure Brickcom Cameras?

Streaming Mode Selection HTTP



RTSP Configuration

